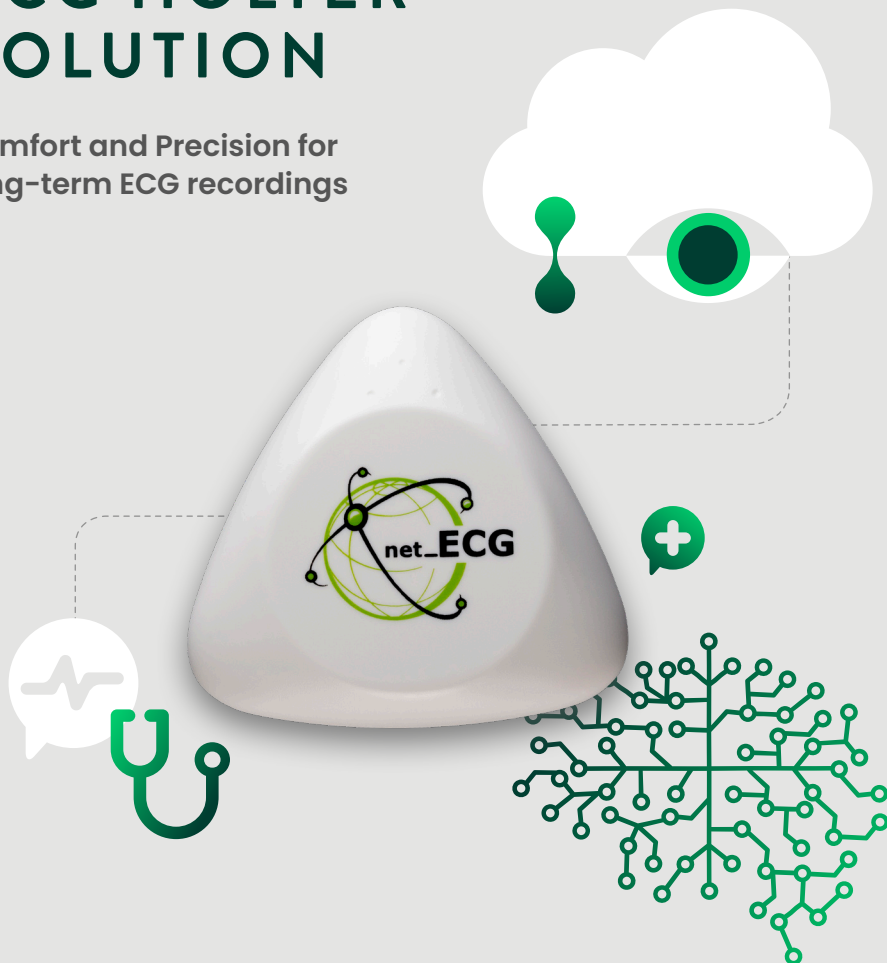


# NET\_ECG - 3 CHANNEL LONG-TERM ECG HOLTER SOLUTION

Comfort and Precision for  
long-term ECG recordings



**SEMDATEX**

[www.semdatex.com](http://www.semdatex.com)

# NET\_ECG

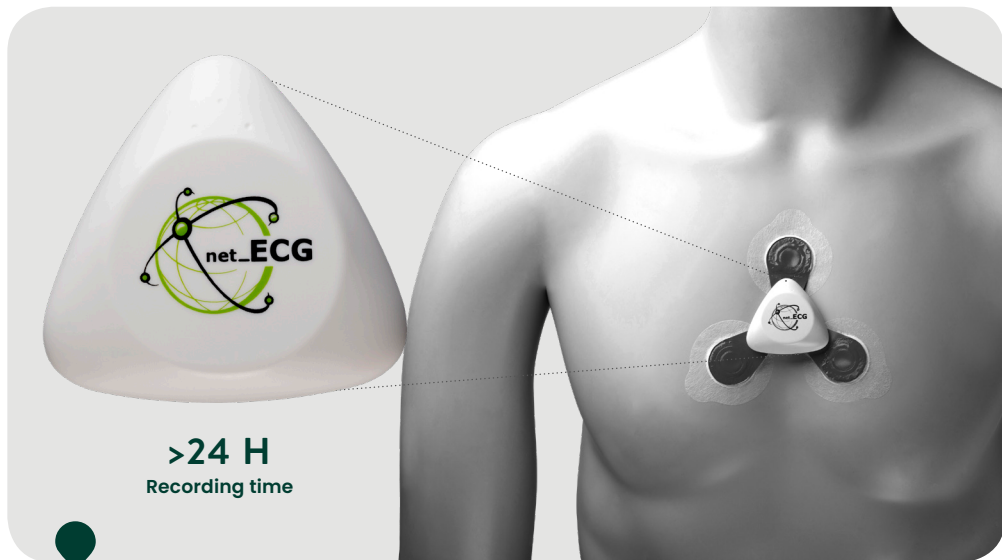
LOW WEIGHT

SMALL SIZE

CABLE FREE

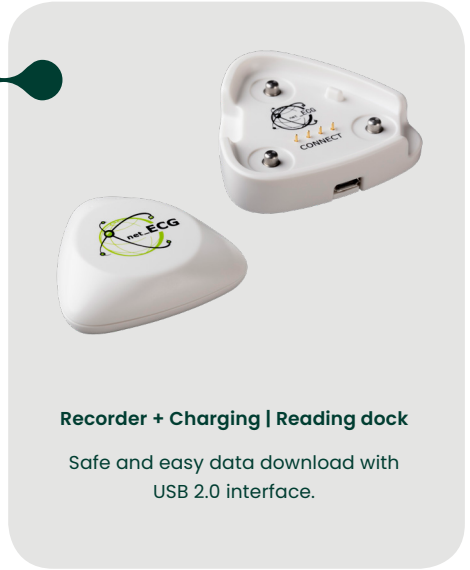
+

Miniaturized long-term Holter-ECG-Recorder for the recording of ECG > 24h



## ADVANTAGES FOR USERS:

- **No impairment of moving:** Patients enjoy a high quality of life and active lifestyle.
- **Discreet and comfortable** to wear.
- **Easy use:** Intuitive hassle-free double tap event marking system.
- **Long recordings possible:** Easy handling, only electrodes need to be changed.



### Recorder + Charging | Reading dock

Safe and easy data download with USB 2.0 interface.

## ADVANTAGES FOR CARDIOLOGISTS:

- **Long battery life:** Up to 12 days of recording with one battery charge.
- **Easy configuration,** commissioning and application.
- **High signal quality:** cable free design results in low signal artefacts.
- **Short learning curve:** smooth and straightforward patient training for outpatient admissions.
- **High compatibility:** Supporting open, standardized ECG data formats, such as EDF+, MIT, ISHNE, PADSy.
- **Adjustable sample rate** from 200 S/s to 800 S/s, usable for AI research.
- **Extra long recordings possible:** Built-in memory allows recording length of up to 60 days.
- **AI-based interpretation** service available.

## Technical specifications:

Size: ca. 50 x 50 x 13,5 mm  
Weight: ca. 23 g  
Three channel ECG recording

Battery: up to 12 days  
Bluetooth 4.0 for Initialization  
ADC resolution 24bit

Frequency bandwidth: 0.1Hz - 75Hz  
Input voltage range: <40mV  
CE-approval

NET\_ECG MAT ID E475306

NET\_ECG CHARGING / READING DOCK MAT ID E476335

# SEMDATEX

WE CREATE A TRUSTED ECOSYSTEM FOR  
**HEALTH CARE MANAGEMENT** THAT PATIENTS  
CAN RELY ON FROM THEIR HOME.

STAY **CONNECTED**

[semdatex.com](https://semdatex.com)

For more information please  
scan the QR-Code:

**SEMDATEX GmbH**

Albert-Einstein-Straße 14,  
12489 Berlin, Germany  
+49 (0) 30 120 843 99



Manufactured by:

**livetec Ingenieurbüro GmbH**  
Marie-Curie-Strasse 8  
79539 Lörrach, Germany

Disclaimer: Pictures of product are courtesy of the manufacturer.